

**READ THESE INSTRUCTIONS THOROUGHLY BEFORE INSTALLATION KEEP THESE INSTRUCTIONS FOR FUTURE REFERENCE.**

**IMPORTANT:**

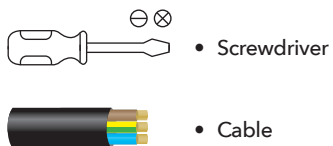
This product must be installed by a qualified electrician or competent person, and in accordance with current building and IET wiring regulations.

**BOX CONTENTS**

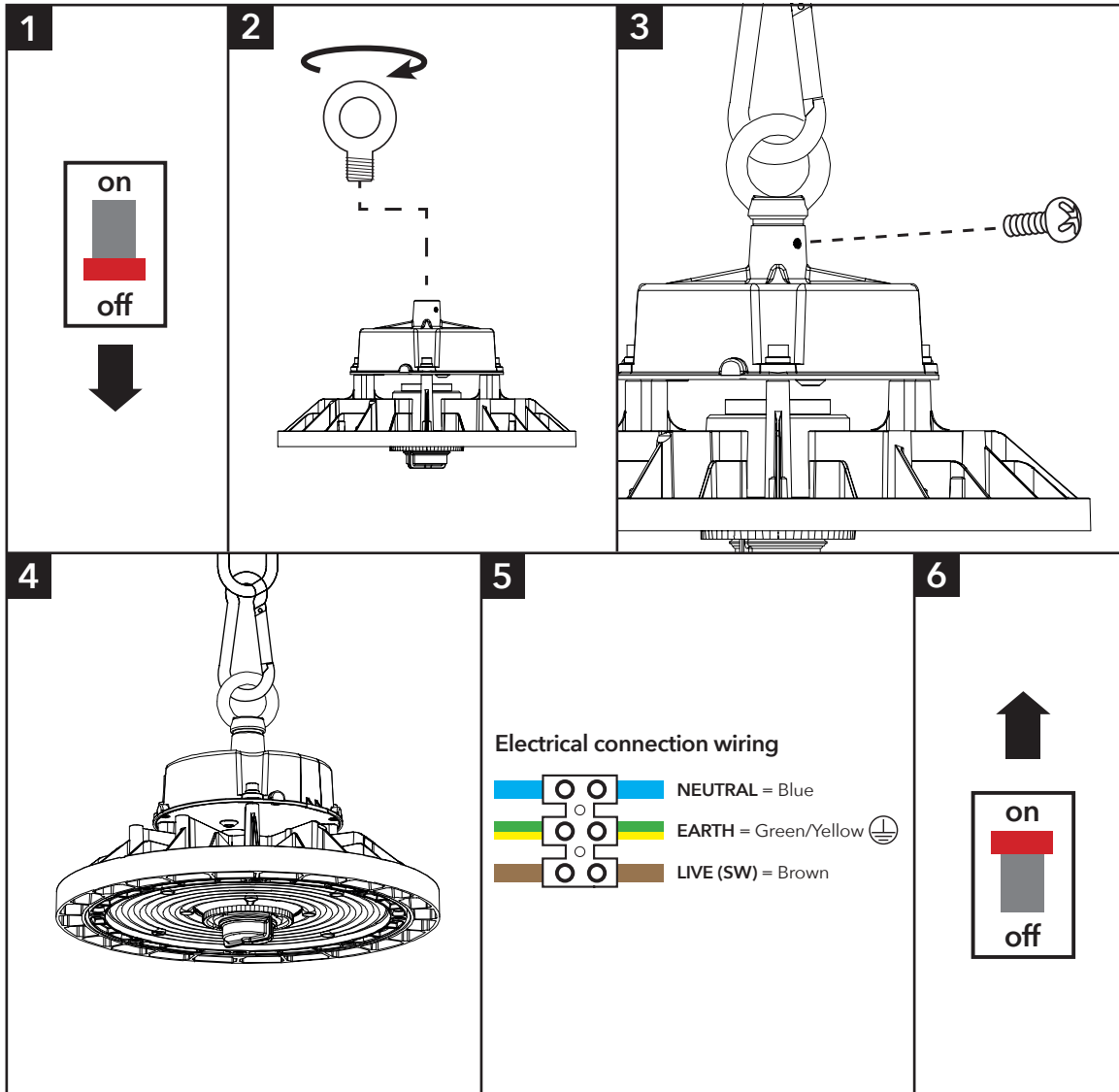
This lighting fixture has been properly packed to avoid damage during transit. Before commencing with the installation carefully inspect the luminaire to confirm there is no damage. **DO NOT INSTALL** if any damage has occurred to the fixture or any of its components:

- Light Fitting
- Instruction Manual
- Eye Bolt

**TOOLS REQUIRED**



**INSTALLATION INSTRUCTIONS**



**PLEASE READ THESE INSTRUCTIONS BEFORE INSTALLATION.**



**WARNING: Risk of electric shock! Isolate the mains power before proceeding.**

- Turn off the mains power before performing inspections, installation, or removal
- Verify that the supply voltage is correct by comparing it with the luminaire label information
- It is the installers responsibility to ensure installation is suitable for the total load of the luminaire(s). The supply cable, fuses/circuit breakers must be correctly rated for the electrical load and considering for any transient inrush currents that may occur
- Do not perform insulation strength or resistance tests on installed luminaire(s) connected

1. Isolate the circuit.
2. Attach the eye bolt to the top of the fitting by screwing the thread into the top hole.
3. Secure the eye bolt using a PH screwdriver.
4. Hang the light fitting using a suitable strengthened suspension cord or chain. Recommend a suitable strength carabiner clip for ease. (See Weights overleaf).
5. Wire as per diagram ensuring a suitable connection method and/or junction box is used, then reconnect mains supply
6. Power on.

## DISPOSAL

The light source of this unit is not replaceable; when the light source reaches its end of life the whole luminaire shall be replaced.

Disassembly instructions for end of life disposal available on website.

Disposal of Electronic Equipment WEEE Directive 2002/96/EC This product falls within the scope of the Waste Electrical & Electronic Equipment Directive (WEEE), which means the product should not be disposed of as normal household waste. Please recycle where facilities exist or check with your Local Authority. RoHS - All components and materials used in this product are RoHS 2002/95/EC compliant.

Specifications may change from time to time. The information contained in this leaflet is for guidance only and should not be considered as always accurate and should be treated as not representative.

## WARRANTY

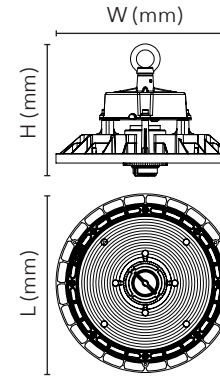
**This luminaire is warranted for a period of 5 years from the date of purchase.\*\*** The warranty could be invalidated should the light fitting not be installed according to these instructions, outside the scope of the specification or the product has been altered or tampered with in any way. Please see website for terms and conditions.

## PRODUCT TEMP SPECIFICATION

Standard -30° to +50°C

## FOREMARK PLUS DIMENSIONS

Part No.	Description	Watts	L (mm)	W (mm)	H (mm)	Weight
430642-120	Foremark Plus High Bay Zhaga 120D	75W	250	250	185	1.6Kg
430642-90	Foremark Plus High Bay Zhaga 90D	75W	250	250	185	1.6Kg
430643-120	Foremark Plus High Bay Zhaga 120D	110W	250	250	185	1.6Kg
430643-90	Foremark Plus High Bay Zhaga 90D	110W	250	250	185	1.6Kg
430644-120	Foremark Plus High Bay Zhaga 120D	150W	261	261	190	1.9Kg
430644-90	Foremark Plus High Bay Zhaga 90D	150W	261	261	190	1.9Kg



Installation Engineers Contact Details:		Luminaire Reference / Location
Name:	Tel:	

Luminaire Details:	Full Recharge Duration <b>24 Hours</b>	Emergency Duration <b>3 Hours</b>	Lamp Type <b>LED</b>

## ROUTINE TEST RECORD

Type Test	Year 1		Year 2		Year 3		Year 4		Year 5	
	Signed	Date	Signed	Date	Signed	Date	Signed	Date	Signed	Date
Functional 1										
Functional 2										
Functional 3										
Functional 4										
Functional 5										
Functional 6										
Functional 7										
Functional 8										
Functional 9										
Functional 10										
Functional 11										
3hr Duration 12										

This product contains a light source of energy efficiency Class B.